

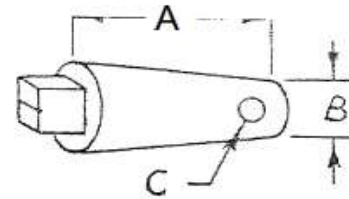
Ductile Iron Plugs

Part Number	Plug Type	Thread Length "A"	Diameter Small End "B"	Drill P/N	Drill Size	Reamer P/N	Tap P/N
401-2101-55	A-155	15/16	0.155	407-5101-55	9/64	*	407-5301-55
401-2102-00	A-200	15/16	0.200	407-5102-00	11/64	*	407-5302-00
401-2102-01*	A-200 1/2	1/2	0.200	407-5102-00	11/64	*	407-5302-00
401-2102-35	A-235	15/16	0.235	407-5102-35	13/64	407-5202-35	407-5302-35
401-2103-27	B-1	1 7/16	0.327	407-5103-27	5/16	407-5203-27	407-5303-27
401-2103-86*	B-1/8	3/4	0.386	407-5103-86	11/32	407-5203-86	407-5303-86
401-2104-20	C	15/16	0.420	407-5104-20	25/64	407-5204-20	407-5304-20
401-2104-21	C-1	1 3/8	0.420	407-5104-20	25/64	407-5204-20	407-5304-20
401-2104-90	D	1	0.490	407-5104-90	15/32	407-5204-90	407-5304-90
401-2104-91	D-1	1 7/16	0.490	407-5104-90	15/32	407-5204-90	407-5304-90
401-2105-90	E	1	0.590	407-5105-90	9/16	407-5205-90	407-5305-90
452-2605-91	E-1	1 7/16	0.590	407-5105-90	9/16	407-5205-90	407-5305-90
452-2607-80	G	1	0.780	*	23/32	407-5207-80	407-5307-80
452-2607-86	R	1 3/4	0.780	*	23/32	407-5207-86*	407-5307-86
452-2608-40	G O	1	0.843	*	51/64	407-5208-40*	407-5308-40
452-2610-80	H	1	1.084	*	1 1/32	407-5210-80	407-5310-80
452-2611-40	H O	1	1.147	*	1 1/16	407-5211-40*	407-5311-41
452-2613-13	J	1 1/2	1.312	*	1 1/4	407-5213-10	407-5313-10

Threadless Ductile Iron Plugs

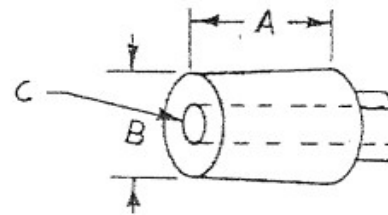
Part Number	Plug Type	Length "A"	Diameter Small End "B"	Drill P/N	Drill Size	Reamer P/N
401-2301-00	TPD	15/16	0.100	*	#30	*
401-2301-25	TPC	15/16	0.125	*	#25	*
401-2302-00	TPA	15/16	0.200	407-5102-00	11/64	407-5202-35
401-2302-89	TPB	15/16	0.289	407-5102-89*	1/4	407-5203-27

* = Soon to be or Already No longer Available



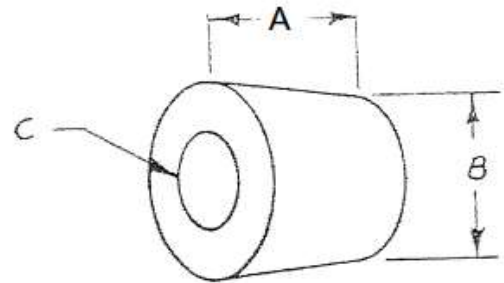
Ductile Iron Drilled Plugs

Part Number	Plug Type	Thread Length "A"	Diameter Small End "B"	Hole Size "C"	Drill Size	Reamer P/N	Tap P/N
452-2604-24	C-1 SPEC.	1 3/8	0.420	13/64	25/94	407-5204-20	407-5304-20
452-2604-94	D-1 SPEC.	1 7/16	0.490	"U" DRILL	15/32	407-5204-90	407-5304-20
452-2605-94	E-1 SPEC.	1 7/16	0.590	3/8	9/16	407-5205-90	407-5305-90



Part Number	Plug Type	Thread Length "A"	Diameter Small End "B"	Hole Size "C"	Drill Size	Reamer P/N	Tap P/N
452-2607-83	G-3	1	0.780	11/32 .344	23/32	407-5207-80	407-5307-80
452-2607-84	G-4	1	0.780	13/32 .406	23/32	407-5207-80	407-5307-80
452-2607-87	R-4	1 3/4	0.780	13/32 .406	23/32	407-5207-86*	407-5307-86
452-2608-43	GO-3	1	0.843	11/32 .344	51/64	407-5208-40*	407-5308-40
452-2608-44	GO-4	1	0.843	13/32 .406	51/64	407-5208-40*	407-5308-40
452-2608-55	GO SHORT	5/8	0.865	17/32 .531	51/64	*	407-5308-40
452-2610-82	H-2	1	1.084	3/8 .375	1 1/32	407-5210-80	407-5310-80
452-2610-84	H-4	1	1.084	23/64 .359	1 1/32	407-5210-80	407-5310-80
452-2611-42	HO-2	1	1.147	3/8 .375	1 1/16	407-5211-40*	*
452-2611-44	HO-4	1	1.147	23/64 .359	1 1/16	407-5211-40*	*
452-2613-14	J-2	1 1/2	1.312	1/2 .500	1 1/4	407-5213-10	407-5313-10

* = Soon to be or Already No longer Available



Ductile Iron Caterpillar Drilled Plugs

Part Number	Plug Type	Thread Length "A"	Diameter Small End "B"	CT BORE Part Number	CT Bore Size	Reamer P/N	Tap P/N	Thread I.D. "C"
452-2615-24	3/4-12 J	1 1/2	1.312	434-6513-20	1 1/4	407-5213-10	*	3/4 - 12
452-2615-28	3/4-12 JO	1 1/2	1.375	434-6513-22*	1 5/16	*	*	3/4 - 12
452-2615-44	7/8-12 J	1 1/2	1.312	434-6513-20	1 1/4	407-5213-10	*	7/8 - 12
452-2615-48	7/8-12 JO	1 1/2	1.375	434-6513-22*	1 5/16	*	*	7/8 - 12
452-2615-64	1-12 M	1 1/2	1.760	436-6518-21*	1 11/16	*	*	1 - 12
452-2615-68*	1-12 M O	1 1/2	1.823	436-6518-22*	1 3/4	*	*	1 - 12
452-2615-74*	1 1/8-12 M	1 1/2	1.760	436-6518-21*	1 11/16	*	*	1 1/8 - 12
452-2615-78*	1 1/8-12 M O	1 1/2	1.823	436-6518-22*	1 3/4	*	*	1 1/8 - 12
452-2615-84*	1 1/4-12 M	1 1/2	1.760	436-6518-21*	1 11/16	*	*	1 1/4 - 12
452-2615-88*	1 1/4-12 M O	1 1/2	1.823	436-6518-22*	1 3/4	*	*	1 1/4 - 12

* = Soon to be or Already No longer Available